



## TEDDS® & S-Frame™ benefit Izzat Consulting Engineers - Australia



- ▶ Hunter Valley Grammar School Hall – Design and Project Management: Izzat. Architect: Bourne + Blue Architecture.

### Izzat Consulting Engineers

[www.izzat.com.au](http://www.izzat.com.au)

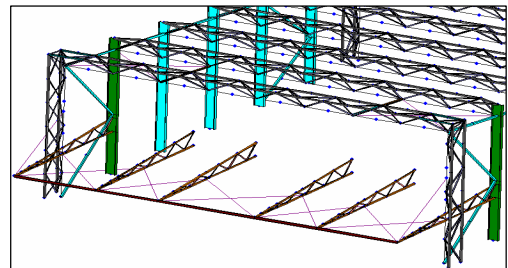
Izzat Consulting Engineers are a fast growing company, which attributes success to informed personnel, consistent quality service, efficient project management, meticulous attention to detail, and innovative design solutions. Izzat specialises in structural and civil engineering design, documentation and asset management. The talented team offers unique engineering solutions. All projects are evaluated with cost effective long term solutions and short-term client requirements in mind. This allows maximising the life span and functionality of the facility while minimising ongoing maintenance costs. Izzat's experience and expertise span over a wide range of Australasian industries including industrial, mining, health, engineering, manufacturing, commercial, government and residential. Izzat uses six TEDDS® licences for fast and professional calculations. TEDDS® contains hundreds of standard calculations for loading, steel, concrete, timber, foundations and analysis. Engineers can add their own calculations to the library. TEDDS® also includes a full library of standard equations, sketches, tables and data.

"We have expanded the capabilities of TEDDS® by acquiring three S-Frame™ licences for 3D structural analysis. Our engineering tools also include CSC's CAD system for structural engineers – 3D+™. This automation enhances our flexibility, saves time and reduces errors. When the inevitable project changes occur, we can re-evaluate and modify quickly and efficiently until we meet our clients' approval."

Brad Dockrill – BE (Civil), FIE Aust, CPEng, - Partner

### Major TEDDS® and S-Frame™ benefits to Izzat Consulting

- ▶ The Izzat team adds their own active calculations simply by typing them into TEDDS®
- ▶ All calculations can be saved to the library for re-use
- ▶ TEDDS® calculations can be integrated with output from other software
- ▶ S-Frame™ handles practically unlimited model complexity, size and analysis capabilities
- ▶ From simple 2D elastic analysis to advanced 3D non linear FE analysis – S-Frame™ handles all with the same simple input and output
- ▶ S-Frame™ output options can be sent to TEDDS® software to integrate with design calculations
- ▶ S-Frame™ is also fully integrated with 3D+™



- ▶ HVGS Hall Structural Model – Rendered. The building has triangular 3D steel trussed rafters, triangular 3D trussed corner columns and regular welded steel columns for the remainder. Maximum span 33.5m approx, maximum height 13.5m approx.

# CSC ▶ Case Study

---

.....



Civil & Structural Computing Pty Ltd  
PO Box 423, Indooroopilly, QLD 4068, Australia  
tel ▶ +61 [0] 431 642 255 fax ▶ +61 [0] 733 785 557  
e-mail ▶ [sales@cscworld.com](mailto:sales@cscworld.com) website ▶ [www.cscworld.com](http://www.cscworld.com)



Off: 2, 56 Hudson St  
Hamilton 2303.  
PO Box: PO Box 3634  
Hamilton BC 2303  
P: +61 4940 0090  
F: +61 4940 0091  
1 800 442 442