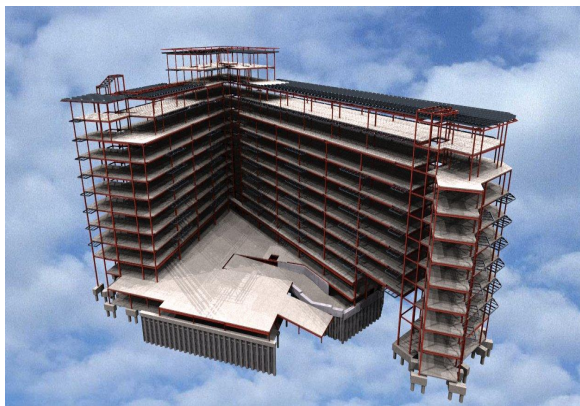




## Integration of 3D+™ and Fastrak Building Designer benefits Capita Symonds Structures



### ▶ XQ7 Salford

#### Capita Symonds Structures

[www.capitasymonds.co.uk](http://www.capitasymonds.co.uk)

Capita Symonds has around 45 offices strategically located throughout the UK and employs almost 3,100 staff. Capita Symonds Structures has a substantial office based in Cheadle, Cheshire with 95 technical staff comprising qualified Structural, Civil, Highways and Geo-environmental engineers. This mix of Engineers, Technicians and Scientists permits Cheadle to deliver an integrated engineering design solution for the infrastructure implementation, planning process, superstructures and ground engineering.

Capita is one of the UK's foremost business solution companies. Their mission is to re-engineer existing work processes using state of the art technology to deliver more efficient processes at lower cost. Capita Symonds Structures therefore has the ability to draw on this technological expertise to provide a work process infrastructure that is second to none.

“The integration of Fastrak Building Designer and 3D+ has been successfully utilised in the design and drafting process of the XQ7 development, Salford, UK.

XQ7 is a 14 storey residential development with integral basement car parking. The steel composite frame was initially drawn within 3D+ and then passed to the Engineer for design by Fastrak Building Designer. On completion the design was sent back to the 3D+ environment where GA's and sectional details were produced. This process provided a dimensionally accurate design model and an efficient frame resulted. An added benefit of the 3D model is that more precise column loads are calculated, which has resulted in a cost-effective foundation solution. To good effect we have also used the ability of 3D+ to track design development changes. This has allowed more effective and accurate reporting to the client, helping with budgetary control. Finally when mated with NavisWorks the 3D model provides an excellent visualisation tool for the whole team.”

▶ **Andy James - Project Engineer**

#### Major integration benefits to Capita Symonds Structures

- ▶ Integrates the Fastrak design model with the 3D+ drawing model, which saves time by automatically creating the drawing model from the design model
- ▶ Ensures the integrity of information as both systems are working on a common set of data rather than two separately input models
- ▶ If the drawing model is revised significantly, the modified geometry can be imported into the Fastrak model to be redesigned – saving substantial time in updating the geometry in the design software