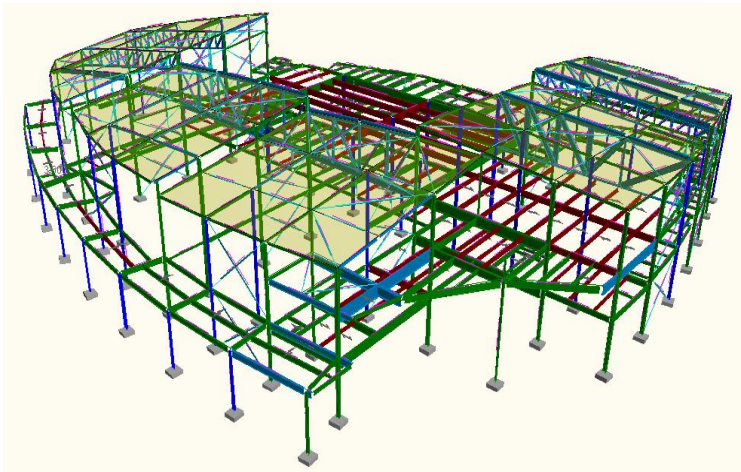




Building Designer benefits Fisher Engineering Ltd – Ireland



► Odeon Cinema, Victoria Square, Belfast

Fisher Engineering Limited

www.fisher-engineering.co.uk

Fisher Engineering are recognised as one of Europe's leading constructional steel fabricators, having been involved in the steelwork industry for fifty years.

In the initial stages of any new product, there are many decisions to make. Consequently, it is good to know that Fisher Engineering offer innovative design opportunities with maximum attention to detail.

The company has invested in a highly computerised design and drawing office, employing the latest 3D software design and detailing packages for the constructional steel industry. All personnel are highly trained and can offer the optimum solution to clients' detailing and design enquiries.

Working from a Client's or Architect's brief, consultant's drawings or in-house designs - scheme drawings, component listings and full manufacturing drawings can be electronically generated.

The speed, flexibility and traceability of the design and drawing office systems allows the company to respond effectively to contract changes and accelerated programmes.

"Fisher Engineering Ltd have always used Fastrak for the design of portal frames but have only recently invested in Fastrak Building Designer for the design of steel and composite building structures. Although this was our first job with the software and we had not reached the scheduled date for training - with the help of CSC's Support Department we were able to model and design the entire structure successfully, despite its complexity. After a short period we have already recognised the benefits for our business from using CSC's software"

Chris Durand – Chief Design Engineer

Major Fastrak benefits to Fisher Engineering Ltd.

- Fastrak Building Designer is flexible enough to provide us with modelling capabilities that suit our workload. There are virtually no modelling limitations, which is important when designing complex steelwork.
- Fastrak addresses all of the design issues in BS5950:2000 (Sway, lack of fit etc) which undoubtedly improves our design efficiency and gives us confidence that we are providing a safe yet economical solution for our clients.
- Fastrak allows us to create a 3D design model, which can be transferred directly into a 3D detailing system. Because the Fastrak model is a true 'physical' model, the information is much more useful than if it were a traditional 'wire frame'.