



3D+™ benefits Faber Maunsell



▶ New Headquarters for BBC Scotland

Faber Maunsell

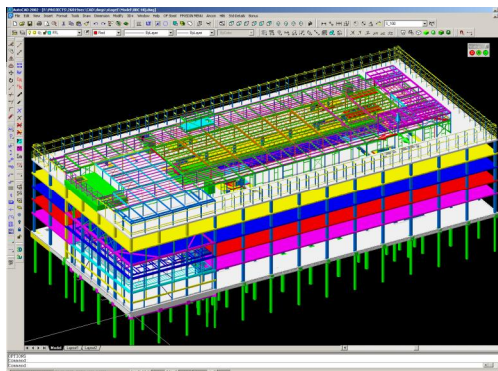
www.fabermaunsell.com

Faber Maunsell is an international, award-winning Consultancy with a reputation for quality, innovation, sustainability and environmental consultancy services. The Consultancy has a turnover in excess of £135m and employs 2,500 people in a network of over 30 office locations across the UK and Europe.

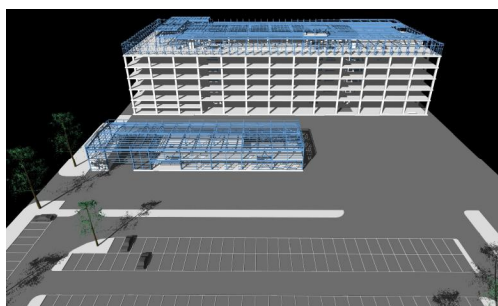
New headquarters for BBC Scotland are being erected in Glasgow – a new £72m flagship building at Pacific Quay. Faber Maunsell provided the civil and structural services for the project. The structure has been fully modelled using CSC's 3D+™ software, which has speeded up the design and detailing process of the complex structure. The main television studio is over three storeys tall and covers an area 27m by 36m. The two upper floors of the building extend over the studio, supported on large steel trusses. For acoustic reasons, the whole structure of Studio A is separated from the rest of the building down to the foundations, using 'box in box' construction.

"The building structure at the BBC Pacific Quay was very complex, with varying steel levels and a large number of technical requirements. The whole building was modelled using 3D+™, which allowed us to use NavisWorks® to "fly through" our model and help transfer design information to the sub-contractors. By using the 3D+™ model with NavisWorks® it also meant that site checking could be carried out much more quickly than from the two dimensional drawings, as members could be identified quickly. The model was also helpful in co-ordinating services within the structure".

▶ Emily Cruickshanks – Resident Engineer



▶ 3D+™ Screen Shot



▶ 3D+™ Model [within NavisWorks®]